



# HOSHIZAKI

## FM-600AKE FLAKE ICE MACHINE G60 / FM-600AKE-N NUGGET ICE MACHINE G60

### Product Description

The FM-600AKE (-N) is a modular Ice maker which produces either Flake or Nugget Ice. Flake and Nugget Ice is popular for a variety of cooling purposes including the display of fish and fresh produce as well as in the medical world for cooling blood and organs. This ice is often used to prepare cocktails and drinks because of the quickness of cooling and limited dilution of drinks.



- Can produce up to 540kg (flake) and 450kg (nugget) of ice per 24 hours respectively (AT.10°C.WT.10°C).
- Flake ice applications: food processing, fish and fresh produce display, organ transportation in medical arena.
- Nugget ice applications: packaged produce display (bottled beverages and food) and as key ingredient in beverages.
- Efficient ice making process due to Hoshizaki's unique FM auger system. Utilises all water brought into the machine; therefore water consumption is equal to ice production.
- Auger is made of double hardened stainless steel. Combined with carbon bearings, they work optimally in a tough and wet environment. Benefits include: longer product life expectancy and reduced maintenance costs.
- Electronically controlled to ensure an optimised ice making process under varying circumstances without the need for physical adjustments. Quality of ice is always consistent.
- Main characteristic of Hoshizaki's Flake ice is that 'freeze- burn' is prevented when displaying fresh fish or produce.

### Available Models

FM-600AKE (Air cooled)
FM-600AKE-N (Air cooled)

### Ice

Model	Shape
FM-600AKE	Flake
FM-600AKE-N	Nugget



### Bins

Model	Type of Bin	Bin Capacity
B-301SA	Modular	144kg
B-501SA, Top Kit TK 8 D		217kg
B-801SA, Top Kit TK 8 D + TK 18 D		348kg

### Production

Model	Ice Production per 24h	Temperature	Water Consumption per 24h
FM-600AKE	Approx. 540kg Approx. 445kg	AT.21°C, WT.15°C AT.32°C, WT.21°C	Approx. 0,57m <sup>3</sup> Approx. 0,48m <sup>3</sup>
FM-600AKE-N	Approx. 460kg Approx. 400kg	AT.21°C, WT.15°C AT.32°C, WT.21°C	Approx. 0,49m <sup>3</sup> Approx. 0,43m <sup>3</sup>

### Two year warranty

For more information visit our website at [www.hoshizaki-europe.com](http://www.hoshizaki-europe.com)  
Hoshizaki Europe B.V. retains the right to change products and their specifications without prior notice.

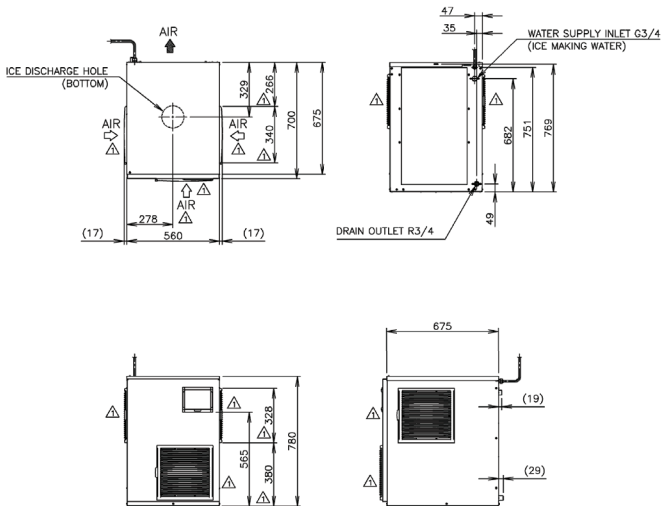




# HOSHIZAKI

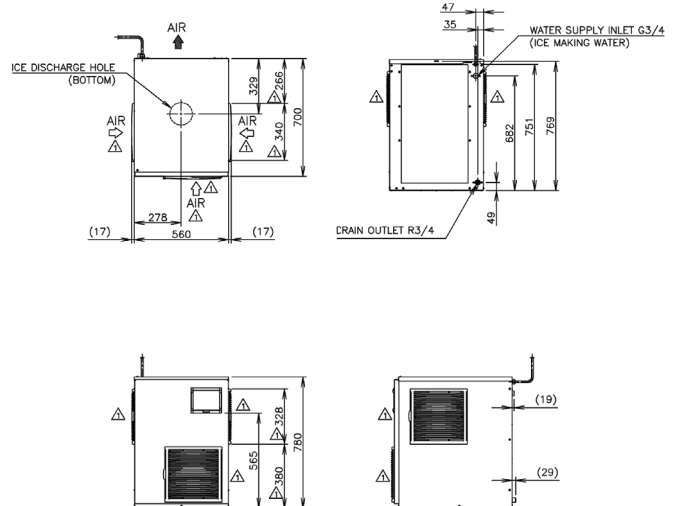
## FM-600AKE FLAKE ICE MACHINE G60 / FM-600AKE-N NUGGET ICE MACHINE G60

FM-600AKE



D09951 / 2011.10.27

FM-600AKE-N



D09951 / 2011.10.27

Specification	FM-600AKE	FM-600AKE-N
<b>Dimensions (W x D x H mm)</b>	560 x 700 x 780	560 x 700 x 780
<b>Power Supply</b>	1 Phase 220-230V 60Hz Capacity: 4,76kVA (20.7A)	1 Phase 220-230V 60Hz Capacity: 4,76kVA (20.7A)
<b>Electric Consumption</b>	1900W (Power Factor: 85%)	1950W (Power Factor: 82%)
<b>Heat Rejection (AT:32°C, WT:21°C)</b>	3950W	3700W
<b>Refrigerant</b>	R404A	R404A
<b>Weight Gross / Net</b>	114kg / 107kg	114kg / 107kg

Operation Conditions	
<b>Ambient Temperature</b>	5 - 40°C
<b>Water Supply Temperature</b>	5 - 35°C
<b>Water Supply Pressure</b>	0,05-0,8MPa (0,5-8bar)
<b>Voltage Range</b>	Rated Voltage ±10%

Accessories
Mounting Bracket
Installation Kit



**Middle East Office**

Lob 16 - 308  
PO Box 261761  
Jebel Ali Free Zone Dubai  
United Arab Emirates

T: +971 (0)48 876 612  
F: +971 (0)48 876 613  
sales@hoshizaki.ae

www.hoshizaki.ae  
www.gram-commercial.com

**Hoshizaki Europe B.V. Headquarters**

Keienbergweg 50 C/D  
1101 GC Amsterdam  
The Netherlands

T: +31 (0)20 6918499  
F: +31 (0)20 6918768

www.hoshizaki-europe.com  
www.gram-commercial.com